

COLLECTION ACADIA

FABRIC TECHNICAL DATA

Fabric composition: 28% Cotton, 39% Polyester, 33% Acrylic

Material weight: 482 g/m²

Abrasion resistance: 40.000 cycles Martindale

Pilling resistance: 4

Lightfastness: 4

INSTRUCTIONS FOR CLEANING AND MAINTANANCE

CHARACTERISTICS:

- Multicolored, textured fabric, nice to touch
- Fancy boucle yarn gives the fabric an original look
- Highly breathable, high comfort of use

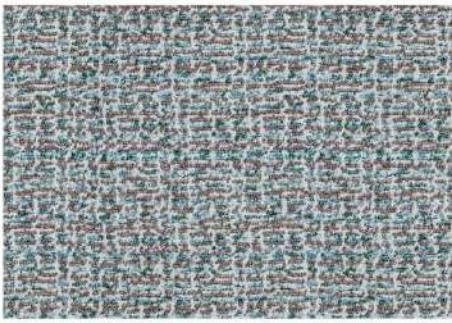
MAINTENANCE:

The Acadia fabric requires very careful cleaning. Flicking of the fabric without using a vacuum cleaner or brush is recommended. The fabric does not have a chemical finish protecting it against water absorption and dirt. In case any slight stains appear, wipe the fabric immediately with a dry cloth without rubbing the surface. Not suitable for hand washing.

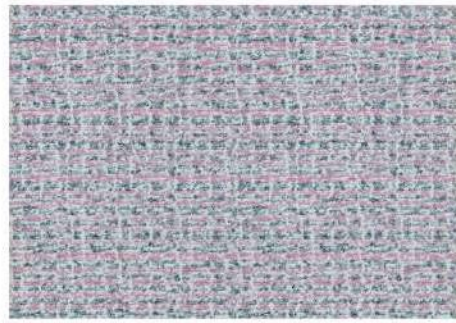
A thorough cleaning or removing substantial dirt should be entrusted to professional maintenance services companies.

A proper maintenance of the fabric is one of key warranty conditions, any treatments damaging the fabric surface constitute the grounds for the rejection of possible complaints.

Shades of fabric swatches and those of the furniture covering may vary slightly.



Acadia 03



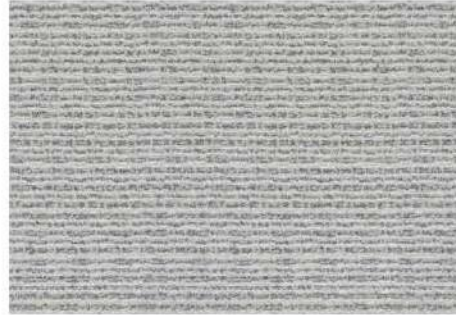
Acadia 04



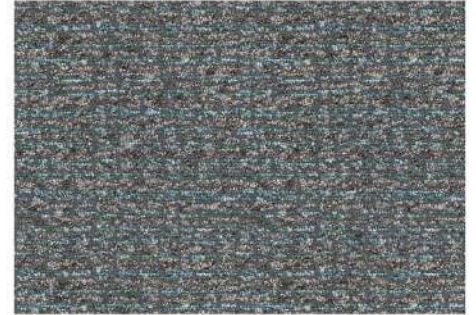
Acadia 05



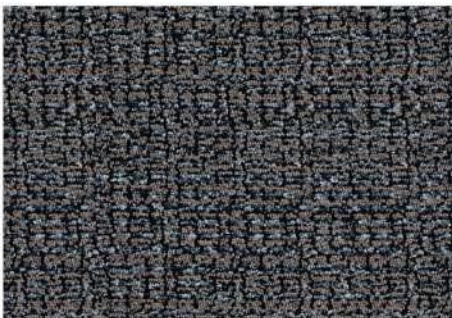
Acadia 12



Acadia 19



Acadia 23



Acadia 27

COLLECTION ARANO

FABRIC TECHNICAL DATA

Composition: 100% Polyester
Material weight: 354 g/m²
Abrasion resistance: 35.000 cycles Martindale
Pilling resistance: 4
Lightfastness: 3-4

INSTRUCTIONS FOR CLEANING AND MAINTANANCE

CHARACTERISTICS:

- Very soft and nice in touch with chenille yarn
- Different shades of yarn and a relief structure
- Highly breathable, high comfort of use

MAINTENANCE:

The Arano fabric requires careful cleaning. We suggest very gentle cleaning with a soft nozzle. In case of any minor stains, the fabric should be wiped quickly with a dry cloth. Avoid rubbing against a damp surface. The fabric is not washable. A thorough cleaning or removing substantial dirt should be assigned to professional maintenance services companies. A proper maintenance of the fabric is one of key warranty conditions; any treatments damaging the fabric surface constitute grounds for the rejection of possible complaints. Shades of fabric swatches and those of a furniture covering may vary slightly.



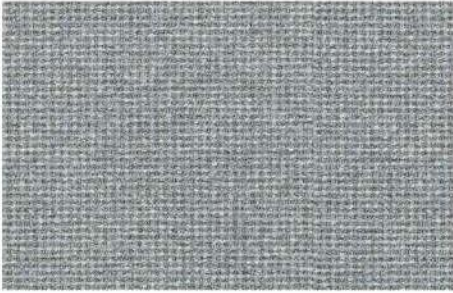
Arano 06



Arano 07



Arano 08



Arano 09



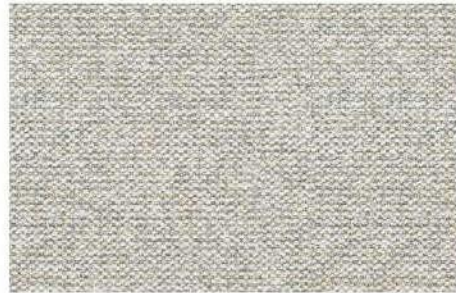
Arano 11



Arano 12



Arano 14



Arano 15



Arano 17



Arano 19



Arano 24

COLLECTION BAMSE

FABRIC TECHNICAL DATA

Fabric composition: 100% Polyester
Material weight: 450 g/m²
Abrasion resistance: 30.000 cycles Martindale
Pilling resistance: 4-5
Lightfastness: 6

INSTRUCTIONS FOR CLEANING AND MAINTANANCE

CHARACTERISTICS:

- Looped knit with a dense texture, reminiscent of a boucle
- One-colored surface, very soft and nice to touch
- Highly breathable, high comfort of use

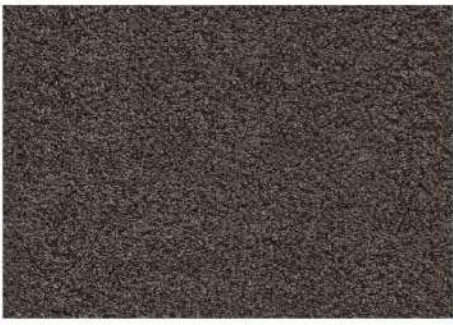
MAINTENANCE:

The Bamse fabric requires very careful cleaning. Flicking the fabric or very gentle vacuuming with a soft nozzle is recommended. The fabric has a wet-stain-repellent finish that protects it from water absorption. In case any slight stains appear, wipe the fabric immediately with a dry cloth without rubbing the surface. Not suitable for hand washing.

A thorough cleaning or removing substantial dirt should be entrusted to professional maintenance services companies.

A proper maintenance of the fabric is one of key warranty conditions, any treatments damaging the fabric surface constitute the grounds for the rejection of possible complaints.

Shades of fabric swatches and those of the furniture covering may vary slightly.



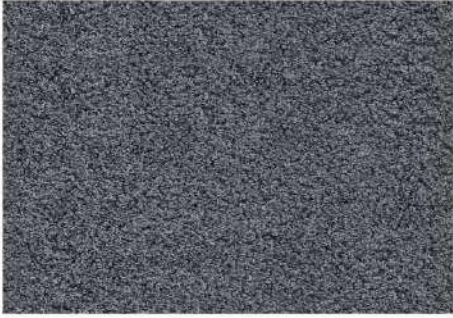
Bamse 06



Bamse 10



Bamse 751



Bamse 760

COLLECTION BOLTON

FABRIC TECHNICAL DATA

Fabric composition: 88% Polyester, 12% Nylon
Material weight: 313 g/m²
Abrasion resistance: 20.000 cycles Martindale
Pilling resistance: 5
Lightfastness: 3-4

INSTRUCTIONS FOR CLEANING AND MAINTANANCE

CHARACTERISTICS:

- Very soft fabric, nice to touch
- Velvety structure with a gentle shading effect
- Highly breathable, high comfort of use

MAINTENANCE:

A gentle vacuuming with a soft nozzle is recommended. The Bolton fabric does not have a chemical finish protecting it against water absorption and dirt. In case any slight stains appear, wipe the fabric immediately with a dry cloth. Avoid rubbing against a damp fabric. The fabric is not washable.

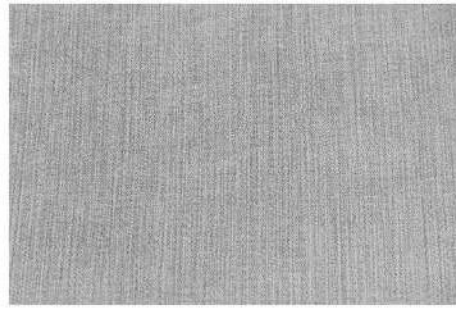
A thorough cleaning or removing substantial dirt should be entrusted to professional maintenance services companies.

A proper maintenance of the fabric is one of key warranty conditions, any treatments damaging the fabric surface constitute the grounds for the rejection of possible complaints.

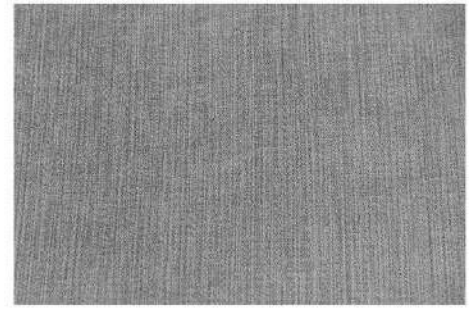
Shades of fabric swatches and those of the furniture covering may vary slightly.



Bolton 21



Bolton 16



Bolton 17



Bolton 19



Bolton 23



Bolton 5



Bolton 9



Bolton 10



Bolton 7



Bolton 1



Bolton 24

COLLECTION CALIPSO

FABRIC TECHNICAL DATA

Fabric composition: 26% Cotton, 25% Polyester, 49% Acrylic
Material weight: 450 g/m²
Abrasion resistance: 40.000 cycles Martindale
Pilling resistance: 4-5
Lightfastness: 4-5

INSTRUCTIONS FOR CLEANING AND MAINTANANCE

CHARACTERISTICS:

- Multicolored, textured fabric, nice to touch
- Fancy boucle yarn gives the fabric an original look
- Highly breathable, high comfort of use

MAINTENANCE:

The Calipso fabric requires careful cleaning. Flicking the fabric or very gentle vacuuming with a soft nozzle is recommended. The fabric does not have a chemical finish protecting it against water absorption and dirt. In case any slight stains appear, wipe the fabric immediately with a dry cloth without rubbing the surface. The fabric is not washable.

A thorough cleaning or removing substantial dirt should be entrusted to professional maintenance services companies.

A proper maintenance of the fabric is one of key warranty conditions, any treatments damaging the fabric surface constitute grounds for the rejection of possible complaints.

Shades of fabric swatches and those of the furniture covering may vary slightly.



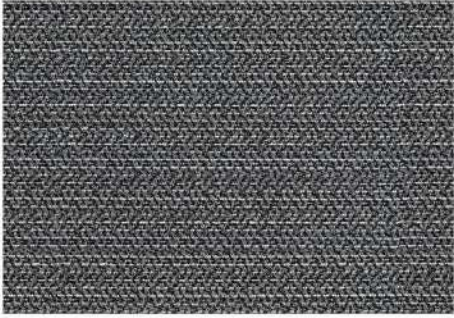
Calipso 07



Calipso 09



Calipso 15



Calipso 16

COLLECTION CANVAS

FABRIC TECHNICAL DATA

Fabric composition: 76% Polyester, 24% Acrylic
Material weight: 576 g/m²
Abrasion resistance: 30.000 cycles Martindale
Pilling resistance: 5
Lightfastness: 5

INSTRUCTIONS FOR CLEANING AND MAINTANANCE

CHARACTERISTICS:

- Fabric with a thick, clear weave, nice to touch
- Contrasting, shiny warp gives the fabric a beautiful look
- Highly breathable, high comfort of use

MAINTENANCE:

The Canvas fabric requires very careful cleaning. Flicking of the fabric without using a vacuum cleaner or brush is recommended. The fabric does not have a chemical finish protecting it against water absorption and dirt. In case any slight stains appear, wipe the fabric immediately with a dry cloth without rubbing the surface. Not suitable for hand washing.

A thorough cleaning or removing substantial dirt should be entrusted to professional maintenance services companies.

A proper maintenance of the fabric is one of key warranty conditions, any treatments damaging the fabric surface constitute the grounds for the rejection of possible complaints.

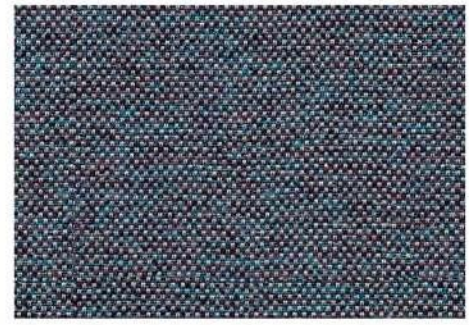
Shades of fabric swatches and those of the furniture covering may vary slightly.



Canvas 06



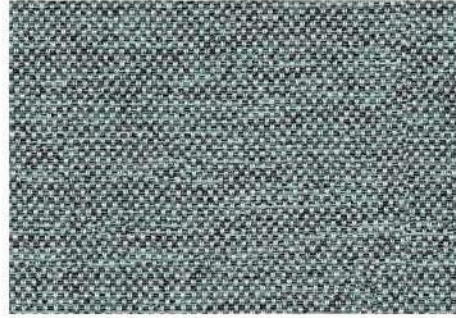
Canvas 07



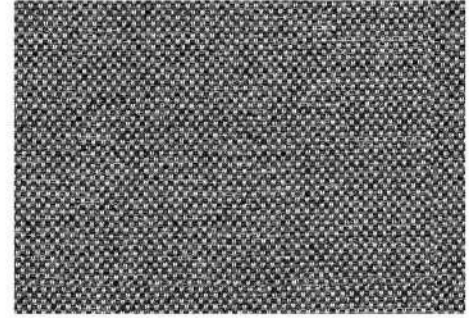
Canvas 11



Canvas 14



Canvas 18



Canvas 19

COLLECTION CASTLE

FABRIC TECHNICAL DATA

Fabric composition: 97% Polyester, 3% Cotton
Material weight: 370 g/m²
Abrasion resistance: 25.000 cycles Martindale
Pilling resistance: 4
Lightfastness: 4

INSTRUCTIONS FOR CLEANING AND MAINTANANCE

CHARACTERISTICS:

- Soft fabric, nice to touch
- Gentle texture and melange of colors give a noble, rustic look
- Highly breathable, high comfort of use

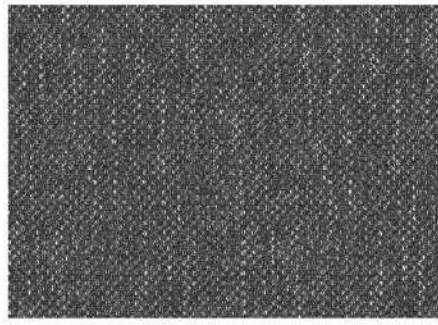
MAINTENANCE:

The Castle fabric requires careful cleaning. A gentle vacuuming with a soft nozzle is recommended. The fabric does not have a chemical finish protecting it against water absorption and dirt. In case any slight stains appear, wipe the fabric immediately with a dry cloth. Avoid rubbing against a damp fabric. The fabric is not washable. A thorough cleaning or removing substantial dirt should be entrusted to professional maintenance services companies. A proper maintenance of the fabric is one of key warranty conditions, any treatments damaging the fabric surface constitute the grounds for the rejection of possible complaints.

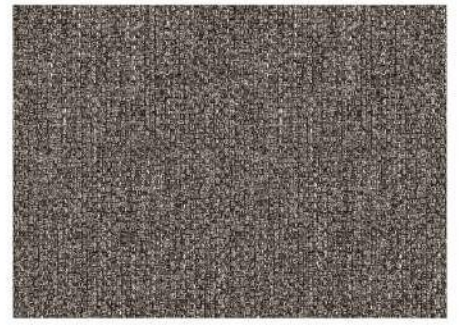
Shades of fabric swatches and those of the furniture covering may vary slightly.



Castle 12



Castle 14



Castle 15



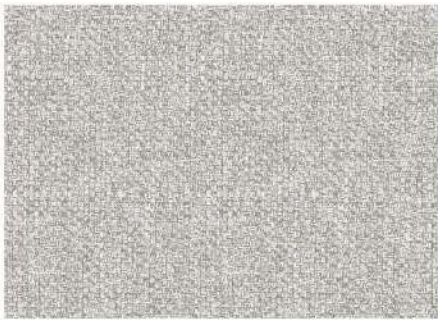
Castle 24



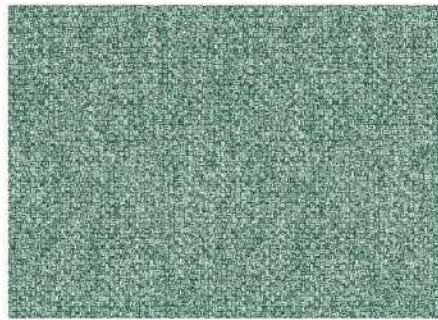
Castle 48



Castle 53



Castle 60



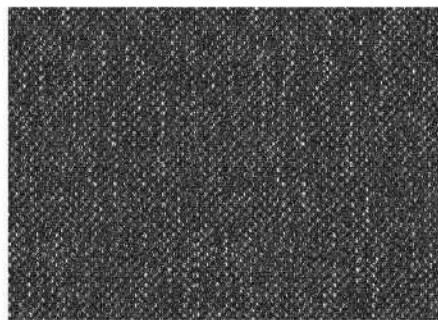
Castle 143



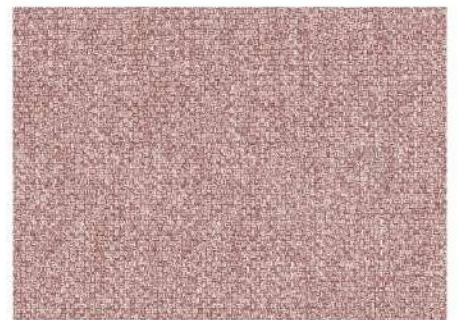
Castle 153



Castle 160



Castle 165



Castle 166



Castle 168

COLLECTION DAKOTA

FABRIC TECHNICAL DATA

Fabric composition: 100% Polyester
Material weight: 480 g/m²
Abrasion resistance: 25.000 cycles Martindale
Pilling resistance: 4-5
Lightfastness: 4

INSTRUCTIONS FOR CLEANING AND MAINTANANCE

CHARACTERISTICS:

- Very soft fabric, nice to touch
- Subtle irregular pattern imitating genuine leather
- Highly breathable, high comfort of use
- Does not attract dust, pilling resistant

MAINTENANCE:

A gentle vacuuming with a soft nozzle is recommended. The Dakota fabric does not have a chemical finish protecting it against water absorption and dirt. In case any slight stains appear, wipe the fabric immediately with a dry cloth. Avoid rubbing against a damp fabric. The fabric is not washable.

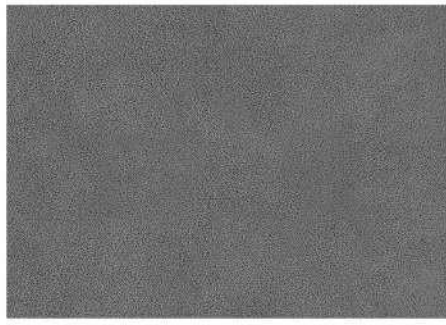
A thorough cleaning or removing substantial dirt should be entrusted to professional maintenance services companies.

A proper maintenance of the fabric is one of key warranty conditions, any treatments damaging the fabric surface constitute the grounds for the rejection of possible complaints.

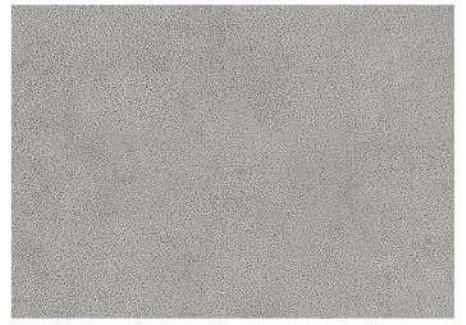
Shades of fabric swatches and those of the furniture covering may vary slightly.



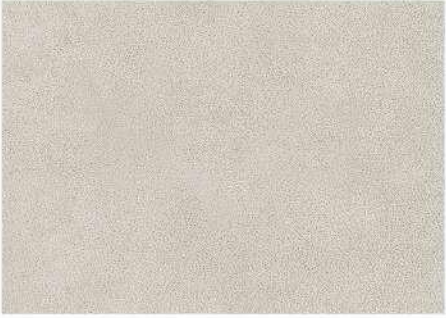
Dakota 1



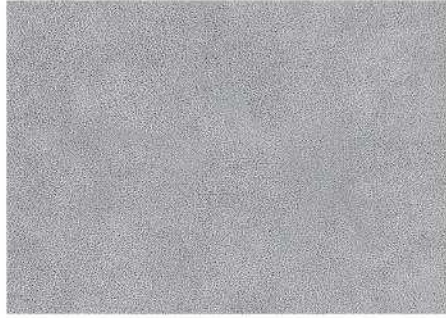
Dakota 2



Dakota 4



Dakota 5



Dakota 6



Dakota 10



Dakota 14

COLLECTION DENALI

FABRIC TECHNICAL DATA

Fabric composition: 100% Polyester
Material weight: 370 g/m²
Abrasion resistance: 50.000 cycles Martindale
Pilling resistance: 4
Lightfastness: 4

INSTRUCTIONS FOR CLEANING AND MAINTANANCE

CHARACTERISTICS:

- Very soft fabric with chenille thread, nice to touch
- Fancy yarn gives a subtle, irregular weave texture
- Highly breathable, high comfort of use

MAINTENANCE:

A gentle vacuuming with a soft nozzle is recommended. The Denali fabric does not have a chemical finish protecting it against water absorption and dirt. In case any slight stains appear, wipe the fabric immediately with a dry cloth. Avoid rubbing against a damp fabric. The fabric is not washable.

A thorough cleaning or removing substantial dirt should be entrusted to professional maintenance services companies.

A proper maintenance of the fabric is one of key warranty conditions, any treatments damaging the fabric surface constitute the grounds for the rejection of possible complaints.

Shades of fabric swatches and those of the furniture covering may vary slightly.



Denali 06



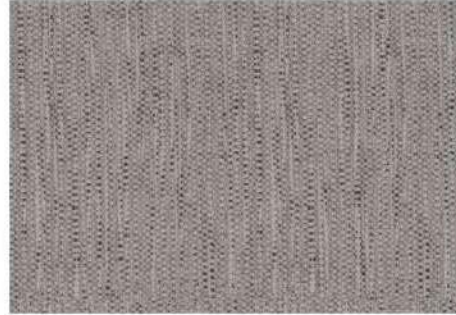
Denali 11



Denali 18



Denali 24



Denali 28



Denali 38



Denali 68



Denali 77



Denali 78



Denali 89

Fabric composition: 100% Polyester
Material weight: 410 g/m²
Abrasion resistance: 80.000 cycles Martindale
Pilling resistance: 5
Lightfastness: 4-5

INSTRUCTIONS FOR CLEANING AND MAINTANANCE

CHARACTERISTICS:

- Very soft velvet, nice to touch
- Elegant material with a velvety, gently shading texture
- Perfectly matches stylish and modern furniture
- Highly breathable, high comfort of use

MAINTENANCE:

During use the fibers on the fabric surface can stack in different directions what triggers shading effect. We recommend gentle cleaning with a soft brush, always following the original direction of the fiber. The fabric is not washable. In case of wet stains, remove the dirt quickly with a dry cloth and allow the fabric to dry. While drying take care that the fibers cover is arranged in the right direction. Do not rub the fabric!

A thorough cleaning or removing substantial dirt should be entrusted to professional maintenance services companies.

A proper maintenance of the fabric is one of key warranty conditions; any treatments damaging the fabric surface constitute grounds for the rejection of possible complaints.

Shades of fabric swatches and those of the furniture covering may vary slightly.



Dolce 01



Dolce 02



Dolce 03



Dolce 04



Dolce 05



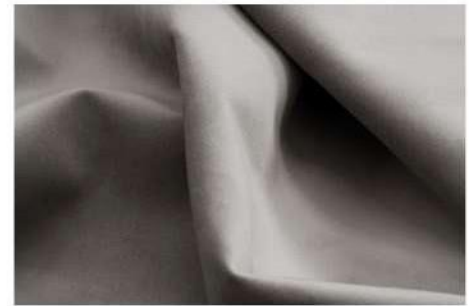
Dolce 06



Dolce 08



Dolce 10



Dolce 11



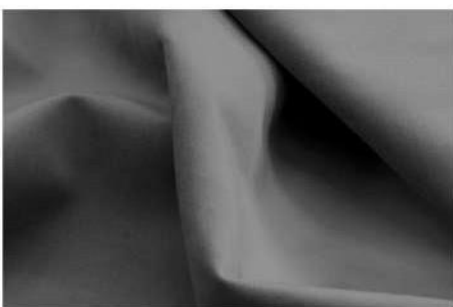
Dolce 12



Dolce 13



Dolce 14



Dolce 15



Dolce 17

COLLECTION FOGO

FABRIC TECHNICAL DATA

Fabric composition: 100% Polyester
Material weight: 289 g/m²
Abrasion resistance: 30.000 cycles Martindale
Pilling resistance: 4-5
Lightfastness: 4

INSTRUCTIONS FOR CLEANING AND MAINTANANCE

CHARACTERISTICS:

- Two-color jacquard fabric, nice to touch
- Weave and colors imitate natural linen fabric
- Highly breathable, high comfort of use

MAINTENANCE:

A gentle vacuuming with a soft nozzle is recommended. The Fogo fabric does not have a chemical finish protecting it against water absorption and dirt. In case any slight stains appear, wipe the fabric immediately with a dry cloth. Avoid rubbing against a damp fabric. Not suitable for hand washing. A thorough cleaning or removing substantial dirt should be entrusted to professional maintenance services companies. A proper maintenance of the fabric is one of key warranty conditions, any treatments damaging the fabric surface constitute the grounds for the rejection of possible complaints.



Fogo 14



Fogo 25



Fogo 37

COLLECTION FORTE

FABRIC TECHNICAL DATA

Fabric composition: 100% Polyester
Material weight: 400 g/m²
Abrasion resistance: 50.000 cycles Martindale
Pilling resistance: 4
Lightfastness: 5

INSTRUCTIONS FOR CLEANING AND MAINTANANCE

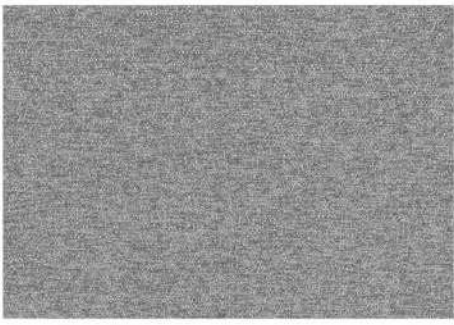
CHARACTERISTICS:

- Very soft fabric with chenille thread, nice to touch
- Different shades of weft and warp give the fabric original look
- Highly breathable, high comfort of use

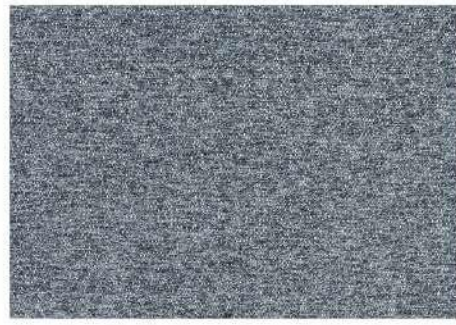
MAINTENANCE:

The Forte fabric requires careful cleaning. A gentle vacuuming with a soft nozzle is recommended. The fabric does not have a chemical finish protecting it against water absorption and dirt. In case any slight stains appear, wipe the fabric immediately with a dry cloth. Avoid rubbing against a damp fabric. The fabric is not washable.

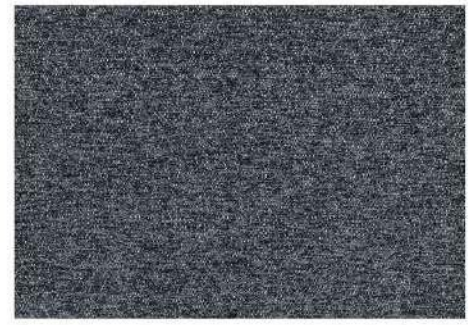
A thorough cleaning or removing substantial dirt should be entrusted to professional maintenance services companies. A proper maintenance of the fabric is one of key warranty conditions, any treatments damaging the fabric surface constitute grounds for the rejection of possible complaints. Shades of fabric swatches and those of the furniture covering may vary slightly.



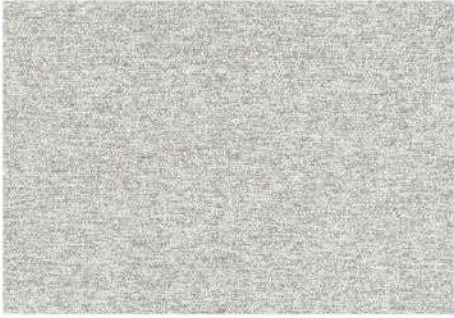
Forte 06



Forte 10



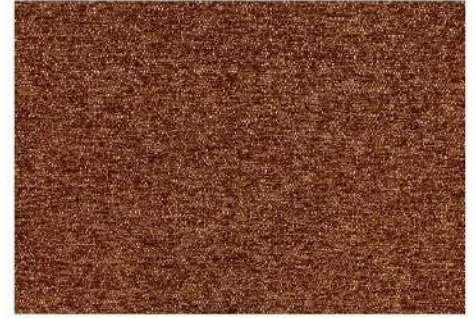
Forte 16



Forte 22



Forte 28



Forte 44



Forte 66



Forte 86

COLLECTION GUIZO

FABRIC TECHNICAL DATA

Fabric composition: 100% Polyester
Material weight: 510 g/m²

INSTRUCTIONS FOR CLEANING AND MAINTANANCE

CHARACTERISTICS:

- Beautiful jacquard fabric with a varied surface
- Sophisticated colors and original, geometric pattern
- Highly breathable, high comfort of use

MAINTENANCE:

A gentle vacuuming with a soft nozzle is recommended. The Guizo fabric does not have a chemical finish protecting it against water absorption and dirt. In case any slight stains appear, wipe the fabric immediately with a dry cloth. Avoid rubbing against a damp fabric. Not suitable for hand washing. A thorough cleaning or removing substantial dirt should be entrusted to professional maintenance services companies.

A proper maintenance of the fabric is one of key warranty conditions, any treatments damaging the fabric surface constitute the grounds for the rejection of possible complaints.

Shades of fabric swatches and those of the furniture covering may vary slightly.



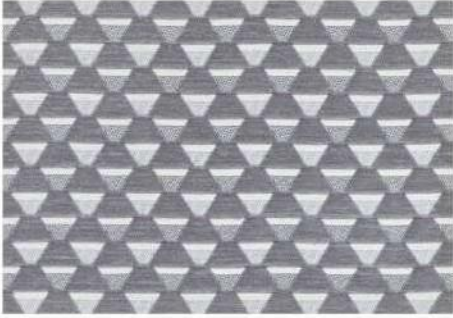
Guizo 705



Guizo 706



Guizo 714



Guizo 806

COLLECTION GUSTO

FABRIC TECHNICAL DATA

Fabric composition: 100% Polyester
Material weight: 499 g/m²
Abrasion resistance: 40.000 cycles Martindale
Pilling resistance: 4-5
Lightfastness: 4-5

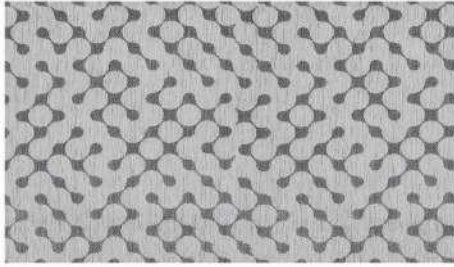
INSTRUCTIONS FOR CLEANING AND MAINTANANCE

CHARACTERISTICS:

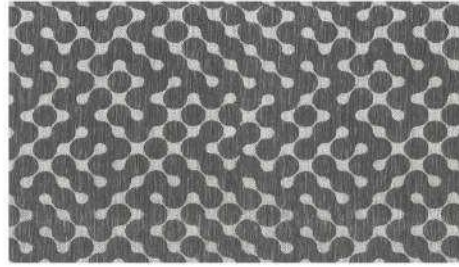
- Two-color jacquard fabric, nice to touch
- Modern design
- Highly breathable, high comfort of use

MAINTENANCE:

A gentle vacuuming with a soft nozzle is recommended. The Gusto fabric does not have a chemical finish protecting it against water absorption and dirt. In case any slight stains appear, wipe the fabric immediately with a dry cloth. Avoid rubbing against a damp fabric. Not suitable for hand washing. A thorough cleaning or removing substantial dirt should be entrusted to professional maintenance services companies. A proper maintenance of the fabric is one of key warranty conditions, any treatments damaging the fabric surface constitute the grounds for the rejection of possible complaints. Shades of fabric swatches and those of the furniture covering may vary slightly.



Gusto 215



Gusto 216



COLLECTION KORA

FABRIC TECHNICAL DATA

Fabric composition: 100% Polyester
Material weight: 466 g/m²
Abrasion resistance: 70.000 cycles Martindale
Pilling resistance: 4
Lightfastness: 4-5

INSTRUCTIONS FOR CLEANING AND MAINTANANCE

CHARACTERISTICS:

- Very soft, structured fabric with chenille yarn
- Thick weave and multicolored background give the fabric an original look
- Highly breathable, high comfort of use

MAINTENANCE:

The Kora fabric requires careful cleaning. A gentle vacuuming with a soft nozzle is recommended. The fabric does not have a chemical finish protecting it against water absorption and dirt. In case any slight stains appear, wipe the fabric immediately with a dry cloth. Avoid rubbing against a damp fabric. The fabric is not washable.

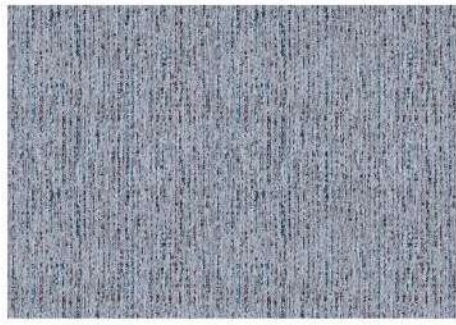
A thorough cleaning or removing substantial dirt should be entrusted to professional maintenance services companies.

A proper maintenance of the fabric is one of key warranty conditions, any treatments damaging the fabric surface constitute the grounds for the rejection of possible complaints.

Shades of fabric swatches and those of the furniture covering may vary slightly.



Kora 01



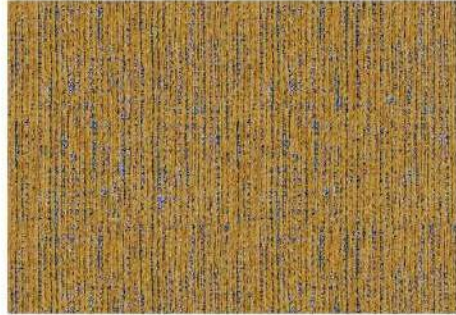
Kora 03



Kora 04



Kora 07



Kora 09

COLLECTION LAGO

FABRIC TECHNICAL DATA

Fabric composition: 100% Polyester
Material weight: 493 g/m²
Abrasion resistance: 80.000 cycles Martindale
Pilling resistance: 4-5
Lightfastness: 4

INSTRUCTIONS FOR CLEANING AND MAINTANANCE

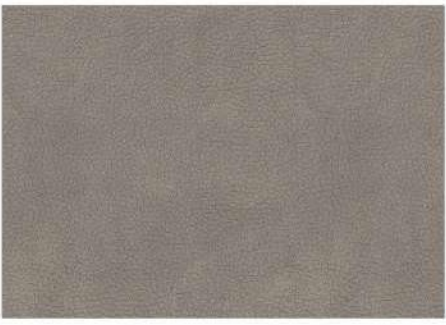
CHARACTERISTICS:

- Soft fabric, nice to touch
- Irregular embossed relief imitating genuine leather
- Highly breathable, high comfort of use
- Does not attract dust, pilling resistant

MAINTENANCE:

A gentle vacuuming with a soft nozzle is recommended. The Lago fabric does not have a chemical finish protecting it against water absorption and dirt. In case any slight stains appear, wipe the fabric immediately with a dry cloth. Avoid rubbing against a damp fabric. The fabric is not machine washable. A thorough cleaning or removing substantial dirt should be entrusted to professional maintenance services companies. A proper maintenance of the fabric is one of key warranty conditions, any treatments damaging the fabric surface constitute the grounds for the rejection of possible complaints.

Shades of fabric swatches and those of the furniture covering may vary slightly.



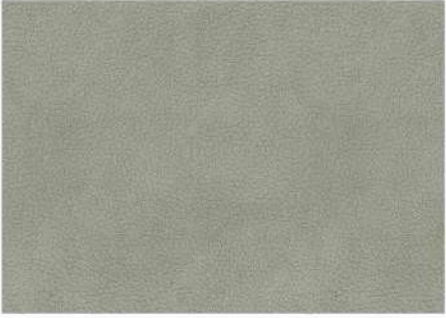
Lago 01



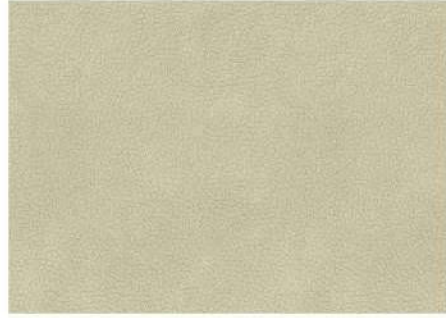
Lago 02



Lago 03



Lago 04



Lago 05



Lago 06



Lago 07



Lago 08



Lago 09



Lago 10

COLLECTION LINDA

FABRIC TECHNICAL DATA

Fabric composition: 94% Polyester, 6% Nylon
Material weight: 350 g/m²
Abrasion resistance: 50.000 cycles Martindale
Pilling resistance: 4-5
Lightfastness: 3-4

INSTRUCTIONS FOR CLEANING AND MAINTANANCE

CHARACTERISTICS:

- Very soft fabric, nice to touch
- Gentle, relief structure and natural colors gives it a noble look
- Highly breathable, high comfort of use

MAINTENANCE:

A very gentle vacuuming with a soft nozzle is recommended. The Linda fabric has a wet-stain-repellent finish that protects it from water absorption. In case any wet stains appear, wipe the fabric immediately with a dry cloth. Avoid rubbing against a damp fabric. The fabric is not machine washable.

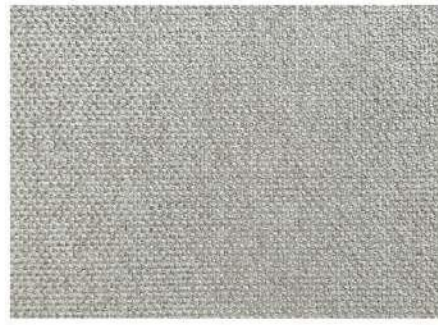
A thorough cleaning or removing substantial dirt should be entrusted to professional maintenance services companies.

A proper maintenance of the fabric is one of key warranty conditions; any treatments damaging the fabric surface constitute grounds for the rejection of possible complaints.

Shades of fabric swatches and those of the furniture covering may vary slightly.



Linda 01



Linda 02



Linda 03



Linda 04



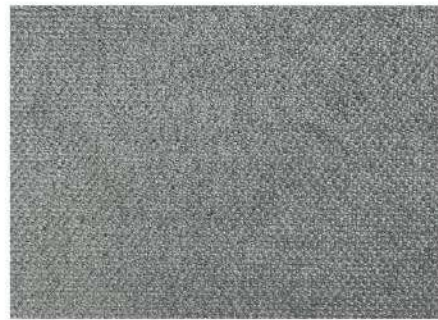
Linda 05



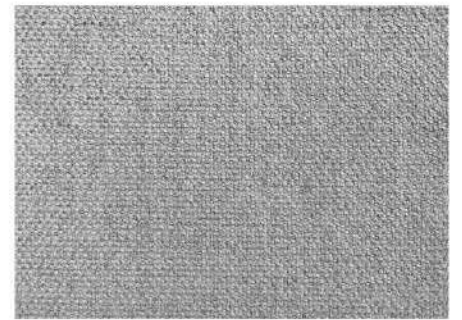
Linda 07



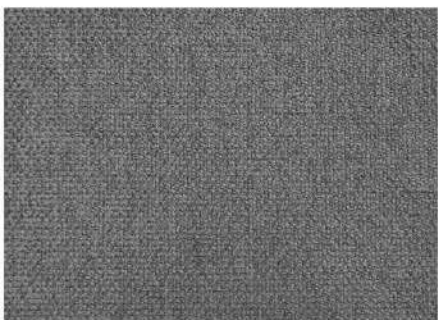
Linda 13



Linda 14



Linda 17



Linda 18



Linda 24

COLLECTION LISBOA

FABRIC TECHNICAL DATA

Fabric composition: 100% Polyester
Material weight: 386 g/m²
Abrasion resistance: 50.000 cycles Martindale
Pilling resistance: 4
Lightfastness: 3-4

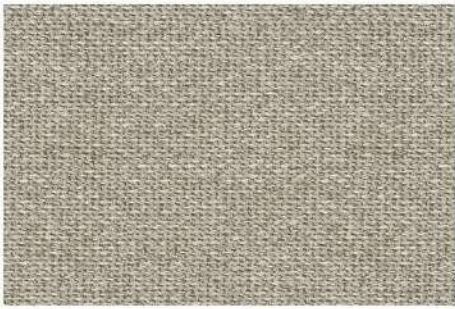
INSTRUCTIONS FOR CLEANING AND MAINTANANCE

CHARACTERISTICS:

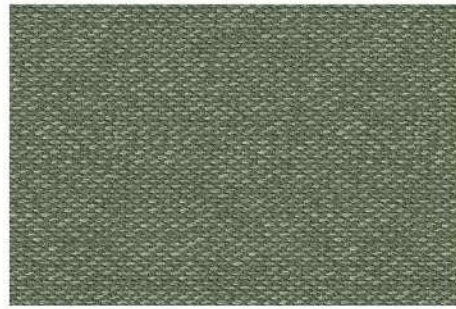
- Soft fabric of a distinct weave, nice to touch
- Gentle structure and a subtle shine give it a noble look
- Highly breathable, provides high comfort of use at any time of the year

MAINTENANCE:

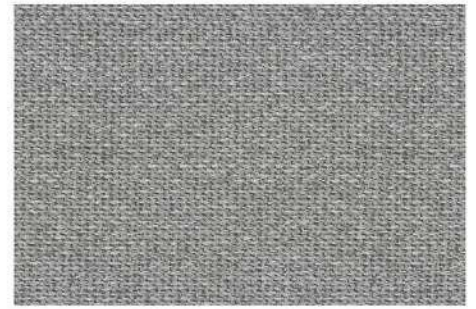
The Lisboa fabric requires careful cleaning. A gentle vacuuming with a very soft nozzle once a week is recommended. The fabric does not have a chemical finish protecting it against water absorption and dirt. In case any slight stains appear, wipe the fabric immediately with a dry cloth. Avoid rubbing against a damp fabric. The fabric is not washable. A thorough cleaning or removing substantial dirt should be entrusted to professional maintenance services companies. A proper maintenance of the fabric is one of key warranty conditions, any treatments damaging the fabric surface constitute the grounds for the rejection of possible complaints. Shades of fabric swatches and those of the furniture covering may vary slightly.



Lisboa 07



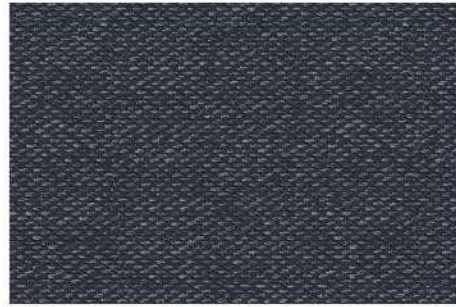
Lisboa 24



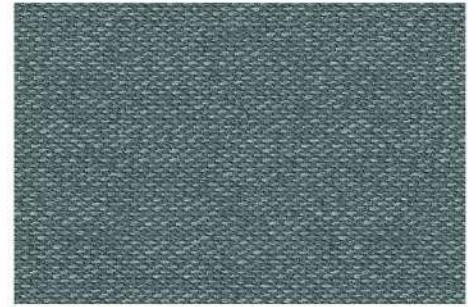
Lisboa 31



Lisboa 32



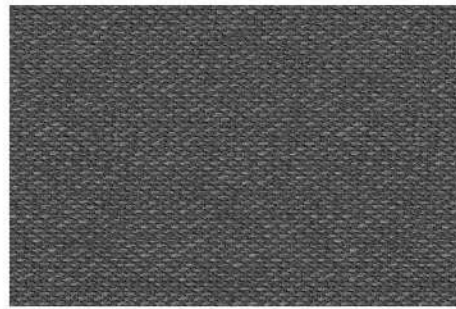
Lisboa 41



Lisboa 66



Lisboa 69



Lisboa 74



Lisboa 84

COLLECTION MADLAO

FABRIC TECHNICAL DATA

Fabric composition: 100% Polyester
Material weight: 380 g/m²
Abrasion resistance: 50.000 cycles Martindale
Color fastness to rubbing: 4-5
Lightfastness: 5

INSTRUCTIONS FOR CLEANING AND MAINTANANCE

CHARACTERISTICS:

- Multicolored printed fabric, nice to touch
- Geometric print gives the effect of freshness and modernity
- Highly breathable, high comfort of use

MAINTENANCE:

A gentle vacuuming with a very soft nozzle is recommended. In case any slight stains appear, wipe the fabric immediately with a dry cloth. Avoid rubbing against a damp fabric. The fabric can be hand washed at 40° C. Before washing, the cushion cover should be turned inside out with its zipper fastened. The fabric is not suitable for bleaching, spinning, drying in a tumble dryer or in the sun. Intense or dark colors may discolor slightly. The cover may shrink gently after washing. The fabric should not be ironed. A proper maintenance of the fabric is one of key warranty conditions, any treatments damaging the fabric surface constitute grounds for the rejection of possible complaints. Shades of fabric swatches and those of the furniture covering may vary slightly.



Madlao 03



Madlao 53

COLLECTION MEGA

FABRIC TECHNICAL DATA

Fabric composition: 100% Polyester
Material weight: 421 g/m²
Abrasion resistance: 50.000 cycles Martindale
Pilling resistance: 4-5
Lightfastness: 4

INSTRUCTIONS FOR CLEANING AND MAINTANANCE

CHARACTERISTICS:

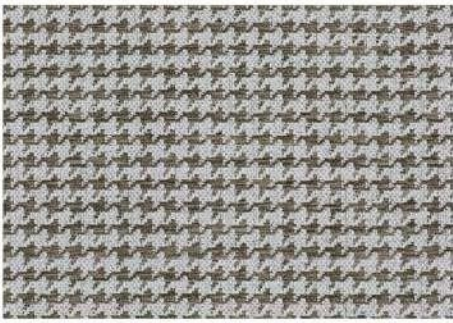
- Jacquard fabric made of chenille yarn, nice to touch
- The fabric has a classic, two-color crow's foot pattern
- Highly breathable, high comfort of use

MAINTENANCE:

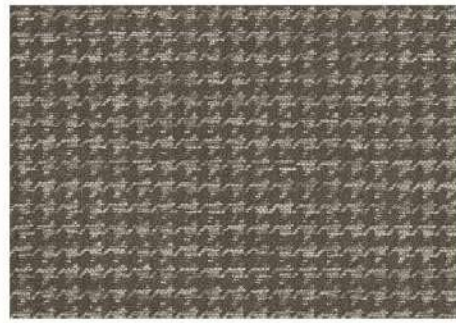
A gentle vacuuming with a soft nozzle is recommended. The Mega fabric does not have a chemical finish protecting it against water absorption and dirt. In case any slight stains appear, wipe the fabric immediately with a dry cloth. Avoid rubbing against a damp fabric. Not suitable for hand washing. A thorough cleaning or removing substantial dirt should be entrusted to professional maintenance services companies.

A proper maintenance of the fabric is one of key warranty conditions, any treatments damaging the fabric surface constitute the grounds for the rejection of possible complaints.

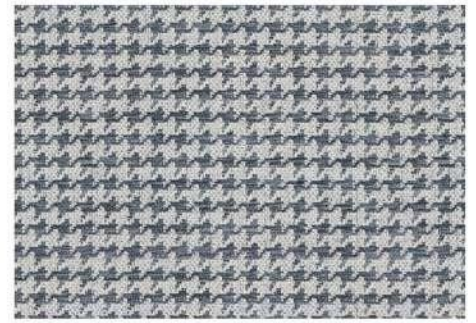
Shades of fabric swatches and those of the furniture covering may vary slightly.



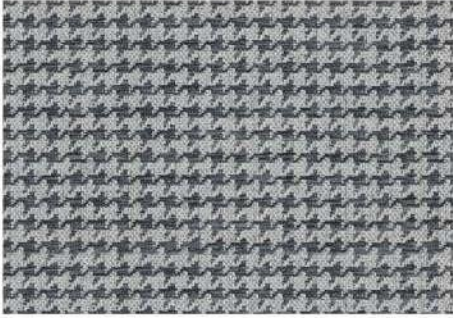
Mega 05



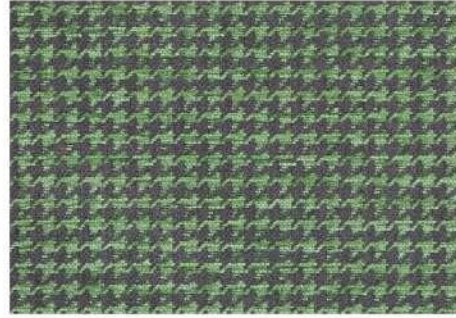
Mega 07



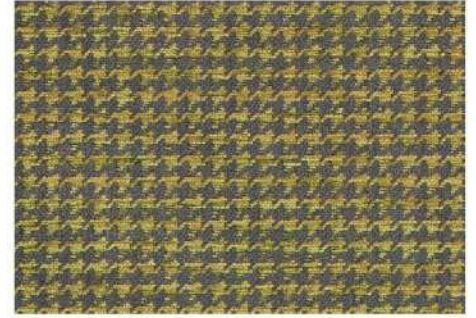
Mega 15



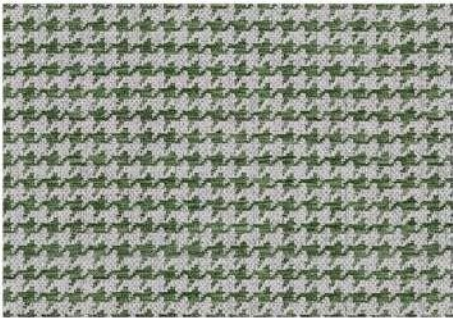
Mega 16



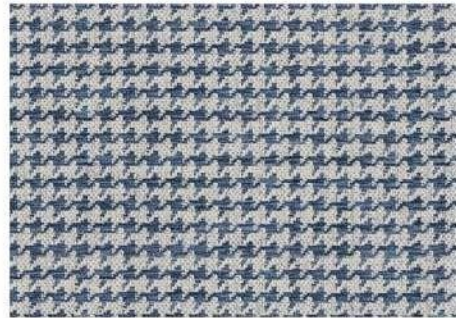
Mega 26



Mega 28



Mega 56



Mega 64



Mega 66



COLLECTION MIRO

FABRIC TECHNICAL DATA

Fabric composition: 100% Polyester
Material weight: 461 g/m²
Abrasion resistance: 60.000 cycles Martindale
Pilling resistance: 3-4
Lightfastness: 4-5

INSTRUCTIONS FOR CLEANING AND MAINTANANCE

CHARACTERISTICS:

- Soft fabric with chenille yarn, nice to touch
- Different colors of the weft and warp give the fabric rustic look
- Highly breathable, high comfort of use

MAINTENANCE:

The Miro fabric requires careful cleaning. We suggest very gentle cleaning with a soft nozzle. In case of any minor stains, the fabric should be wiped quickly with a dry cloth. Avoid rubbing against a damp surface. The fabric is not washable. A thorough cleaning or removing substantial dirt should be assigned to professional maintenance services companies. A proper maintenance of the fabric is one of key warranty conditions; any treatments damaging the fabric surface constitute grounds for the rejection of possible complaints. Shades of fabric swatches and those of a furniture covering may vary slightly.



Miro 01



Miro 06



Miro 07



Miro 14



Miro 15



Miro 16



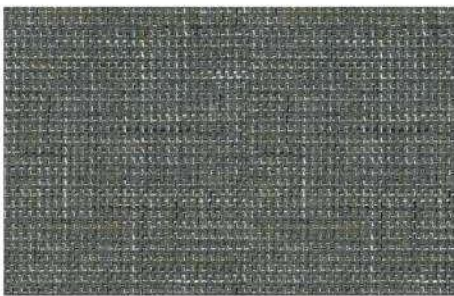
Miro 19



Miro 21



Miro 80



Miro 205

COLLECTION NEVADA

FABRIC TECHNICAL DATA

Fabric composition: 100% Polyester
Material weight: 300 g/m²
Abrasion resistance: 35.000 cycles Martindale
Pilling resistance: 4-5
Lightfastness: 4-6

INSTRUCTIONS FOR CLEANING AND MAINTANANCE

CHARACTERISTICS:

- Jacquard fabric with chenille yarn, nice to touch
- The fabric has a geometric, two-color pattern
- Highly breathable, high comfort of use

MAINTENANCE:

A gentle vacuuming with a soft nozzle is recommended. The Nevada fabric does not have a chemical finish protecting it against water absorption and dirt. In case any slight stains appear, wipe the fabric immediately with a dry cloth. Avoid rubbing against a damp fabric. Not suitable for hand washing. A thorough cleaning or removing substantial dirt should be entrusted to professional maintenance services companies.

A proper maintenance of the fabric is one of key warranty conditions, any treatments damaging the fabric surface constitute the grounds for the rejection of possible complaints.

Shades of fabric swatches and those of the furniture covering may vary slightly.



Nevada 108



Nevada 123



Nevada 341



Nevada 342



Nevada 981

COLLECTION PIANO

FABRIC TECHNICAL DATA

Composition faceside: 85% Polyester, 15% Nylon
Composition backing: 100% Polyester
Abrasion resistance: 25.000 Martindale cycles
Pilling resistance: 3-4
Lightfastness: 3-4

INSTRUCTIONS FOR CLEANING AND MAINTANANCE

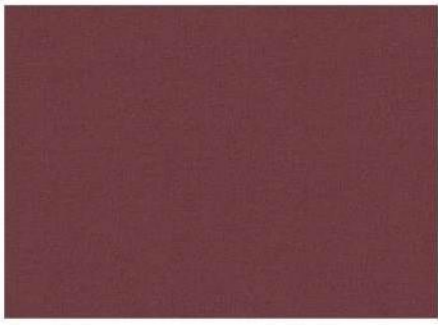
CHARACTERISTICS:

- soft fabric, nice to touch
- smooth, mat surface imitates suede
- soft underlay raises usage comfort
- highly breathable, high comfort of use

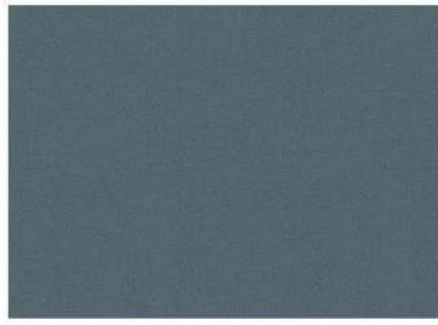
MAINTENANCE:

We recommend gentle cleaning with a soft brush, always following the original direction of the fiber. The fabric is not washable. In case of wet stains, remove the dirt quickly with a dry cloth and allow the fabric to dry. While drying take care that the fibers cover is arranged in the right direction. Do not rub the fabric! A thorough cleaning or removing substantial dirt should be entrusted to professional maintenance services companies. A proper maintenance of the fabric is one of key warranty conditions; any treatments damaging the fabric surface constitute grounds for the rejection of possible complaints.

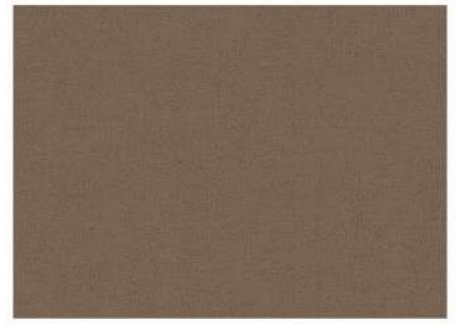
Shades of fabric swatches and those of the furniture covering may vary slightly.



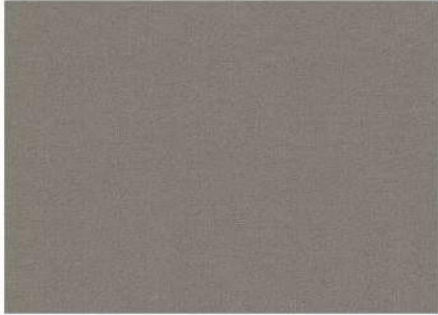
Piano 02



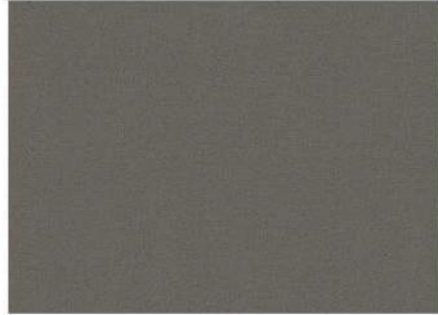
Piano 04



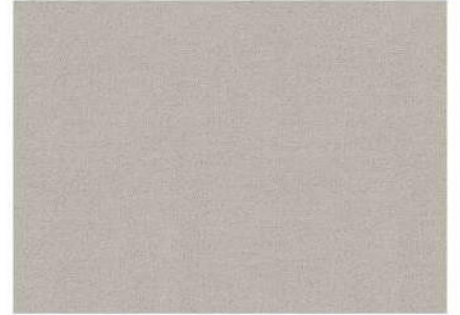
Piano 10



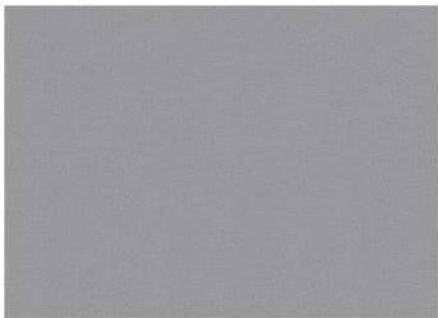
Piano 11



Piano 12



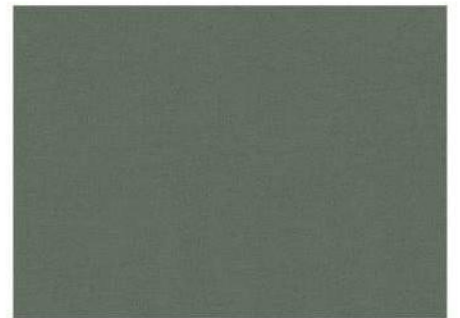
Piano 15



Piano 16



Piano 17



Piano 24



Piano 715



COLLECTION RIVER

FABRIC TECHNICAL DATA

Fabric composition: 100% Polyester
Material weight: 400 g/m²
Abrasion resistance: 23.000 cycles Martindale
Pilling resistance: 4
Lightfastness: 4

INSTRUCTIONS FOR CLEANING AND MAINTANANCE

CHARACTERISTICS:

- Very soft fabric with chenille thread, nice to touch
- Structural surface and melange yarn give it a noble look
- Highly breathable, high comfort of use

MAINTENANCE:

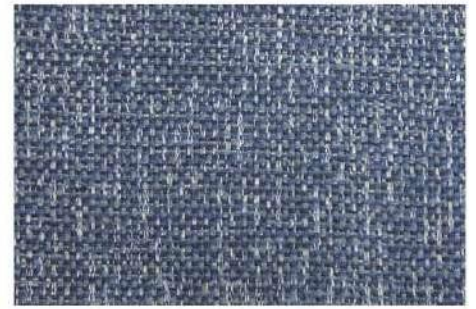
The River fabric requires careful cleaning. We suggest very gentle cleaning with a soft nozzle. In case of any minor stains, the fabric should be wiped quickly with a dry cloth. Avoid rubbing against a damp surface. The fabric is not washable. A thorough cleaning or removing substantial dirt should be assigned to professional maintenance services companies. A proper maintenance of the fabric is one of key warranty conditions; any treatments damaging the fabric surface constitute grounds for the rejection of possible complaints. Shades of fabric swatches and those of a furniture covering may vary slightly.



River 02



River 16



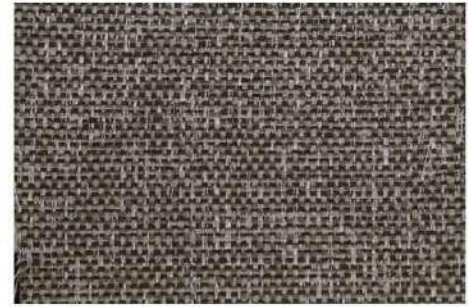
River 20



River 22



River 56



River 65



River 66



River 80



River 83

COLLECTION SAHARA

FABRIC TECHNICAL DATA

Fabric composition: 100% Polyester
Material weight: 310 g/m²
Abrasion resistance: 40.000 cycles Martindale
Pilling resistance: 4
Lightfastness: 3-4

INSTRUCTIONS FOR CLEANING AND MAINTANANCE

CHARACTERISTICS:

- Soft and smooth fabric, nice to touch
- Irregular print on the surface gives the fabric a genuine leather look
- Highly breathable, high comfort of use
- Does not attract dust, pilling resistant

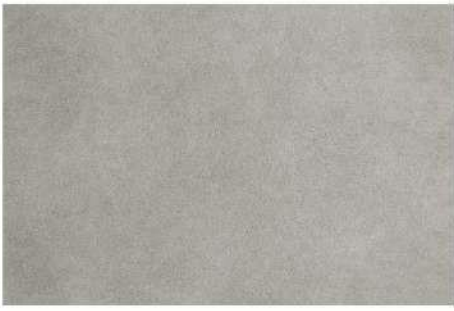
MAINTENANCE:

A gentle vacuuming with a soft nozzle is recommended. The Sahara fabric does not have a chemical finish protecting it against water absorption and dirt. In case any slight stains appear, wipe the fabric immediately with a dry cloth. Avoid rubbing against a damp fabric. The fabric is not washable.

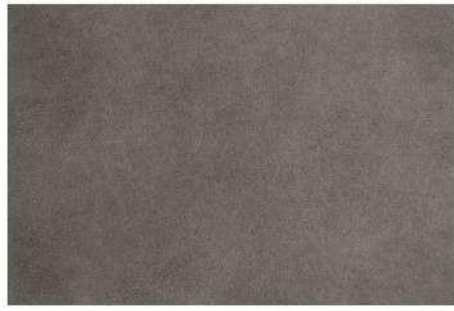
A thorough cleaning or removing substantial dirt should be entrusted to professional maintenance services companies.

A proper maintenance of the fabric is one of key warranty conditions, any treatments damaging the fabric surface constitute the grounds for the rejection of possible complaints.

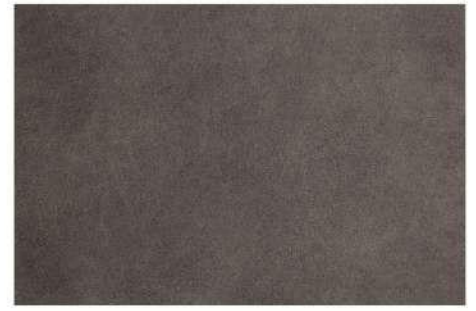
Shades of fabric swatches and those of the furniture covering may vary slightly.



Sahara 5



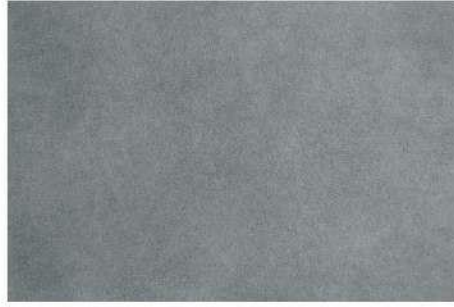
Sahara 09



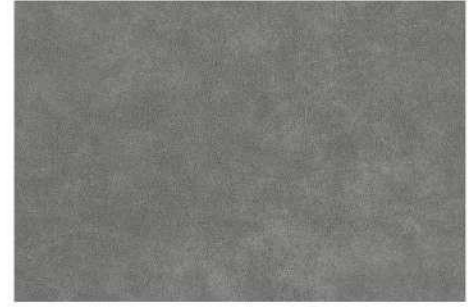
Sahara 10



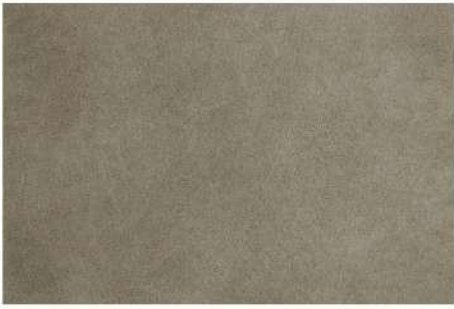
Sahara 11



Sahara 18



Sahara 19



Sahara 23

COLLECTION SAJMA

FABRIC TECHNICAL DATA

Fabric composition: 100% Polyester
Material weight: 410 g/m²
Abrasion resistance: 100.000 cycles Martindale
Pilling resistance: 4
Lightfastness: 5

INSTRUCTIONS FOR CLEANING AND MAINTANANCE

CHARACTERISTICS:

- Very soft, structured chenille fabric, nice to touch
- Thick weave and subtle brilliance give the fabric an original look
- Highly breathable, high comfort of use

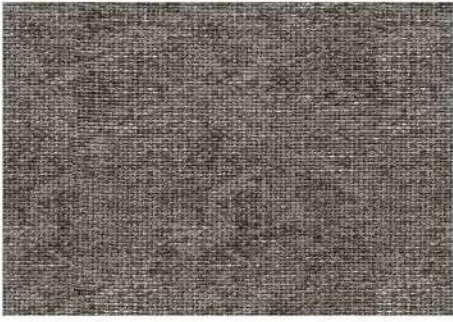
MAINTENANCE:

The Sajma fabric requires careful cleaning. A gentle vacuuming with a soft nozzle is recommended. The fabric does not have a chemical finish protecting it against water absorption and dirt. In case any slight stains appear, wipe the fabric immediately with a dry cloth. Avoid rubbing against a damp fabric. The fabric is not washable.

A thorough cleaning or removing substantial dirt should be entrusted to professional maintenance services companies.

A proper maintenance of the fabric is one of key warranty conditions, any treatments damaging the fabric surface constitute the grounds for the rejection of possible complaints.

Shades of fabric swatches and those of the furniture covering may vary slightly.



Sajma 03



Sajma 06



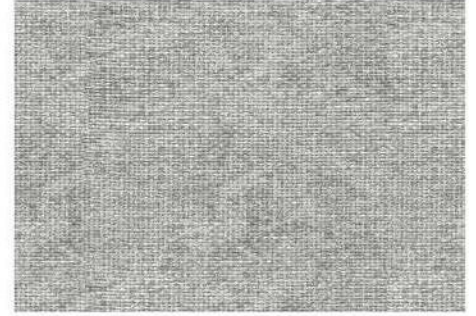
Sajma 07



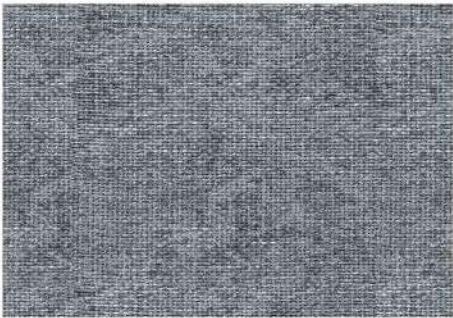
Sajma 11



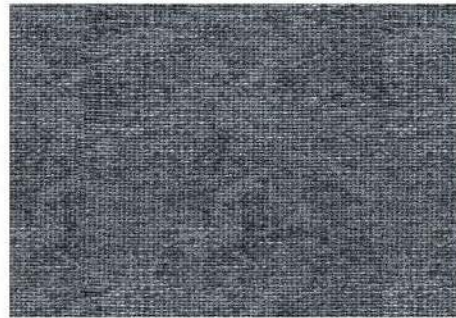
Sajma 12



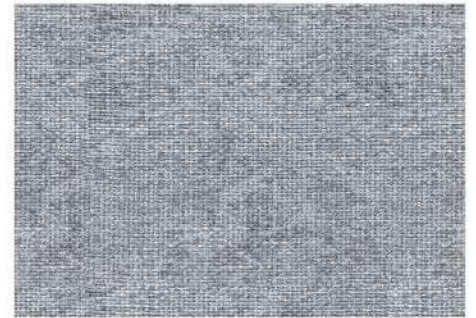
Sajma 15



Sajma 17



Sajma 18



Sajma 20

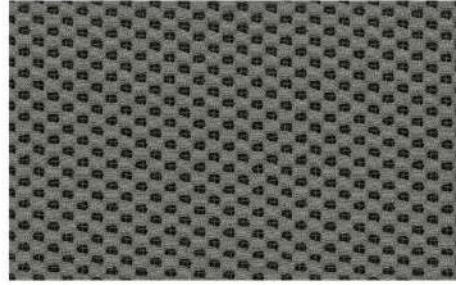
COLLECTION SINTRA

FABRIC TECHNICAL DATA

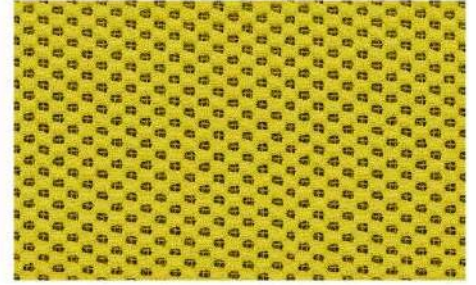
Fabric composition: 100% Polyester
Material weight: 550 g/m²
Abrasion resistance: 120.000 cycles Martindale
Pilling resistance: 5



Sintra 02



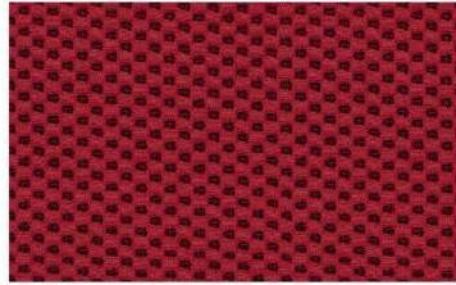
Sintra 03



Sintra 04



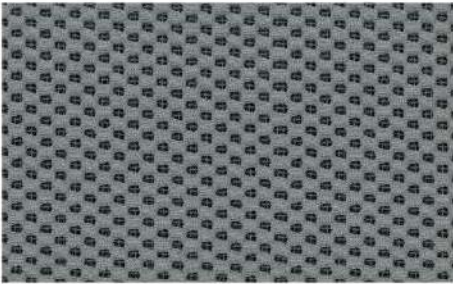
Sintra 05



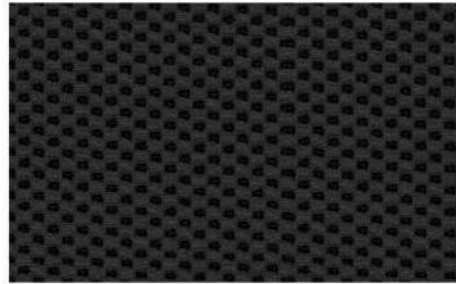
Sintra 08



Sintra 13



Sintra 16



Sintra 17



COLLECTION VENUS

FABRIC TECHNICAL DATA

Fabric composition: 100% Polyester
Material weight: 450 g/m²
Abrasion resistance: 100.000 cycles Martindale
Pilling resistance: 5
Lightfastness: 4-5

INSTRUCTIONS FOR CLEANING AND MAINTANANCE

CHARACTERISTICS:

- Textured fabric, nice to touch
- Fancy boucle yarn gives the fabric an original look
- Highly breathable, high comfort of use

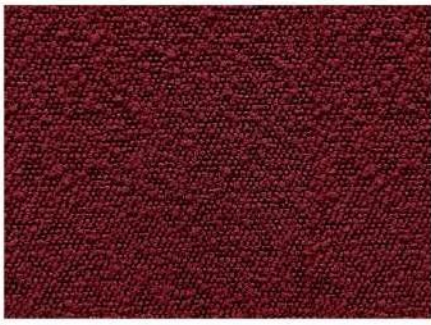
MAINTENANCE:

The Venus fabric requires careful cleaning. Flicking the fabric or very gentle vacuuming with a soft nozzle is recommended. The fabric does not have a chemical finish protecting it against water absorption and dirt. In case any slight stains appear, wipe the fabric immediately with a dry cloth without rubbing the surface. The fabric is not machine washable.

A thorough cleaning or removing substantial dirt should be entrusted to professional maintenance services companies.

A proper maintenance of the fabric is one of key warranty conditions, any treatments damaging the fabric surface constitute grounds for the rejection of possible complaints.

Shades of fabric swatches and those of the furniture covering may vary slightly.



Venus 201



Venus 304



Venus 400



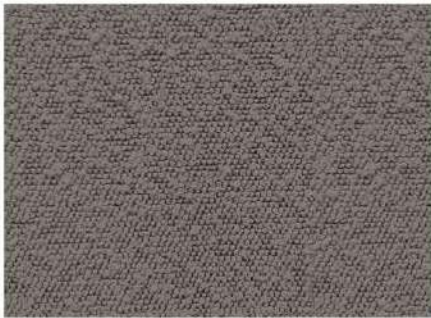
Venus 802



Venus 803



Venus 901



Venus 903